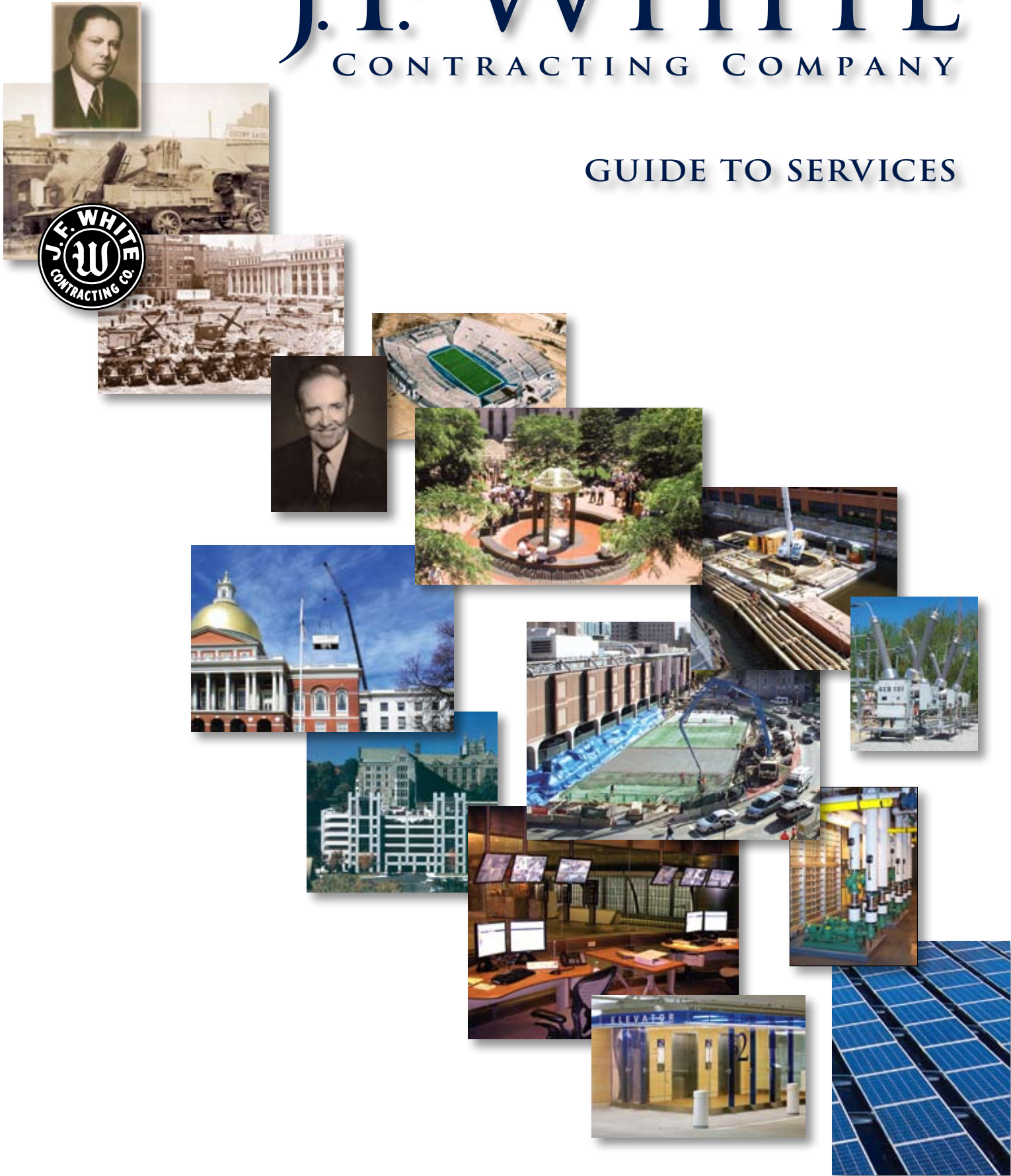


J.F. WHITE

CONTRACTING COMPANY

GUIDE TO SERVICES



J.F. WHITE CONTRACTING COMPANY

GENERAL CONTRACTING - MECHANICAL - ELECTRICAL - DEEP FOUNDATION - MARINE - DIVE

In serving the private construction market, J.F. White applies extensive engineering experience specific to each project's locale and physical requirements. The preconstruction phase of a project has the greatest influence in determining a successful outcome – holding budget and meeting schedule.

As construction manager, general contractor or major specialty subcontractor, no local contractor brings as much relevant experience to planning, engineering and execution as J.F. White. The Company tackles projects with a multi-disciplined approach, saving the client valuable time and money.

J.F. White owns and maintains a \$20 million fleet of equipment, enabling the Company to mobilize quickly and control costs.

The Company's safety record is exemplary. Quality, compliance and a history of integrity ensures the client a positive experience.

One client recently praised J.F. White as "consistently reliable," attesting to the professionalism and results-oriented nature of its project teams.

"J.F. White's people are proactive and knowledgeable. Their planning is careful, thoughtful and skilled."

Doug Schmidt
Harvard University



**We Engineer Safety
Into Every Project**





“ The success of all projects performed by J.F. White lies in their work ethic, their business ethics and their consideration of all aspects of the project from budgeting through completion. I have full confidence in J.F. White’s ability to deliver on any job to the very highest industry standards.”

Minhaj Kirmani
Weidlinger Associates



“ Our relationship with J.F. White is one of trust.”

David Forbes
Waldron Engineering & Construction

“ It is in J.F. White’s culture to build relationships.”

John E. Regan, P.E.
GZA GeoEnvironmental, Inc.

“ What J.F. White achieved was excellent - quality work performed in an efficient manner.”

Joe O’Farrell
Partners Healthcare

CONSISTENTLY RELIABLE



Statler Building

J. F. White was hired by E. M. Statler, a legendary businessman, to excavate and build the foundation of the Statler Hotel and Towers in 1925.



Since its founding in 1924, J.F. White Contracting Company has served both the public construction market and the private owners and developers with a multi-disciplined approach to general contracting. The history of the Company is a legacy of simple beginnings, hard work, strong family values and integrity; yielding growth, reliability and impressive accomplishments in both the public and private markets. Today, the Company's management approach is defined by a principles-based business approach that advocates for the project Owner's best interests.

J.F. White applies significant relevant experience gained on projects throughout its history - both private and public - to resolve the physical, financial and logistics challenges posed by site conditions, design, and pro-forma budgets. Working in close proximity to adjacent facilities takes planning, patience and professional excellence to ensure against impacts to, or disruption of, existing structures and systems.

Private owners, construction managers, design engineers and specialty project consultants benefit from the professionalism of J.F. White's project teams and the Company's ability to participate as stakeholders in the success of the project.



The Garage at Post Office Square and Norman B. Leventhal Park

In 1992, J.F. White was entrusted by visionary developer Norman B. Leventhal and the “Friends of Post Office Square” to convert a drab city-owned parking garage into a privately owned and managed urban park with an 80-foot-deep, revenue-producing underground parking garage. As a leader in New England’s heavy/civil construction market, the Company was capable of executing a tight low bid for the complex infrastructure to the very highest standards of quality and construction excellence.



Schaefer Stadium

Considered a remarkable achievement for a public agency contractor, J.F. White and a peer design firm engineered and built the 62,000-seat home of the Boston Patriots in 1971, enabling team owner Billy Sullivan to keep the team in the area. The Company dug the lower level of the stadium into a bowl, completing the project at a fraction of the cost of stadiums nationwide.

● Preconstruction

▶ Identify & Evaluate Project Issues/Risks Develop Solution(s)

- Structural engineering assessment
- Critical equipment & materials assessment
- Noise & dust abatement reviews
- Geotechnical engineering evaluation
- Environmental & soils engineering
- Site Specific Safety Plan

● Budget & Schedule

▶ Estimate & Competitively Price

- Cost/Budget analysis
- Budget assessment on alternate systems
- Project schedule input & confirmation
- Value engineering for maximum savings to the client

● Construction

▶ Self-Perform & Manage Time-Critical Work

- Site security & strategic access
- Site excavation & materials handling
- Utility support, protection, relocation & installation
- Selective demolition on rehab & expansion projects
- Micro tunneling & pipe jacking
- Sheeting, shoring, underpinning & foundation pile driving
- Top Down construction - Engineered options & techniques
- Internal bracing & support of excavation
- Pre-trenching & obstruction removal
- Concrete structures & appurtenances
- Site work, streetscape & landscaping
- Management of subcontractor participants

SERVING THE PRIVATE CLIENT

Harvard University Oxford Street Garage

Five-story underground parking structure constructed in mixed residential/university neighborhood using top/down construction methods



J.F. White understands the dynamics and primary drivers of the private market. The value of its participation on a project is defined by the reliability of budgets developed from current cost data on similar work and knowledge of the local market. Private owners value the dependability of J.F. White's schedules and construction sequencing; safety; the quality of its work; management of equipment and human resources; mitigation of impacts on adjacent structures, businesses and inhabitants from operations; and the flexibility to accommodate Owner needs. J.F. White operates to these standards whether selected as low bidder or by way of a negotiated GMP with a sophisticated and discerning client.

In metropolitan Boston, J.F. White is respected as a cooperative contractor that has solid working relationships with city agencies, authorities, and labor organizations.

*" They care about their quality.
They care about the outcome.
They care about the team.
When you deal with J.F. White,
it's like being part of a larger
family. It's extraordinary."*

Dominic Ingegneri
Project Management Consultant

Brigham and Women's Hospital Shapiro Cardiovascular Center

Excavation and construction of 3-level basement and foundation slab structure requiring relocation of Francis Street and maintenance of traffic





“ J.F. White offers owners a balanced approach - their office support is as strong as their field personnel who are like generals devising a plan and implementing it. Their executive leadership know the business and can work through tough challenges. That’s what sets them apart.”

John Nolan, Harvard University



“ Vibrations from construction operations could have easily disrupted delicate neurosurgical procedures being performed in the hospital. J.F. White was flexible and understood our need to shut down construction from time to time. There was never a question about the quality of J.F. White’s work, whether it was excavation or concrete placement for the floor slabs.”

**Joe O’Farrell
Partners Healthcare**

MECHANICAL & ELECTRICAL SERVICES

J.F. White's Mechanical and Electrical Divisions have built strong credentials in the private market, drawing from the Company's experience on construction projects and safety record.

J.F. White's Mechanical Group offers services including heating, ventilation and air conditioning (HVAC), process piping, power, water treatment and complex instrumentation systems. The Group's experience with pumps, building controls, air handling, boiler installations, steam systems and chilled water systems appeals to private power companies, manufacturing plants and building owners.

The Electrical Group has built strong credentials on industrial and commercial building projects and as a provider of complex electrical integrated systems telecommunications and renewable energy, engineering and construction services. The Group employs a solid core of professional electrical engineers and experienced electricians - capable of executing time-critical and complex installations in the most reliable capacity an Owner can demand.

J.F. White Specialty services are often packaged as part of the Company's broader involvement in projects requiring a multidisciplinary approach.



"When you have the right people and the right chemistry, trust grows and problems are easily resolved. Our residents love the people at J.F. White."

Phil Kenney
Brook House Condominiums

"Attention to details and proactive planning enabled the project team to anticipate and resolve potential field conditions."

Semoon Oh
VAV International



Brook House Condominiums

Fan coil and riser replacement project in occupied high-rise condominium development

Massachusetts State House HVAC Upgrade



J.F. White's Mechanical Group replaced existing boiler and chiller tower with two 393 kbtu/h boilers and installation of 750-ton centrifugal chiller without disrupting activities at State House

Steam Turbine Design & Installation



J.F. White self-performs mechanical and electrical design and installations



● Preconstruction

► Identify & Evaluate Project Issues/Risks Develop Solution(s)

- Scope review and confirmation
- Budget assessment on specialty items
- Scheduled co-ordination of trades and equipment
- Value engineering for maximum savings to the client
- Site Specific Safety Plan for specialty trades
- Energy efficiency/Conservation evaluation
- Major materials coordination

● Budget & Schedule

► Estimate & Competitively Price

- Cost/Budget analysis
- Budget assessment on alternate systems
- Project schedule input & confirmation
- Value engineering for maximum savings to the client
- Option to bid out specialty trades with confidence
- Design-Build-Finance energy automation & conservation

● Construction

► Self-Perform & Manage Time-Critical Work

Mechanical Services

- Self-perform mechanical scope
- Utility tunnels, sleeves & encased ductbank
- Boiler/chiller R&R in occupied space
- Water treatment and process piping
- HVAC renewal in tenanted space
- Rooftop equipment R&R by air
- Gas line Installation

Electrical Services

- Self-perform electrical scope
- Instrumentation & systems integration
- Telcom/Security/IT system install
- Fire protection/Alarm systems
- Manage specialty trades with confidence
- Lighting
- Fiber optic cable & splicing
- Power distribution
- Renewable energy

POWER & ENERGY SOLUTIONS



Harvard University Blackstone Steam Plant

Multi-phased, multi-discipline improvements including underground fuel tank replacement, soil remediation, electrical upgrade, voltage substation, medium voltage switchgear, and steam turbine installation all without service interruption

" We anticipated a very tough, difficult job. J.F. White was confident in its ability, worked closely with our consultants, offered innovative solutions and applied solid construction principles to plan and execute the work."

Doug Schmidt
Harvard University



NSTAR North Lexington Station

345kv Shunt Reactor and capacitive voltage transformers, surge arrestors, and buswork



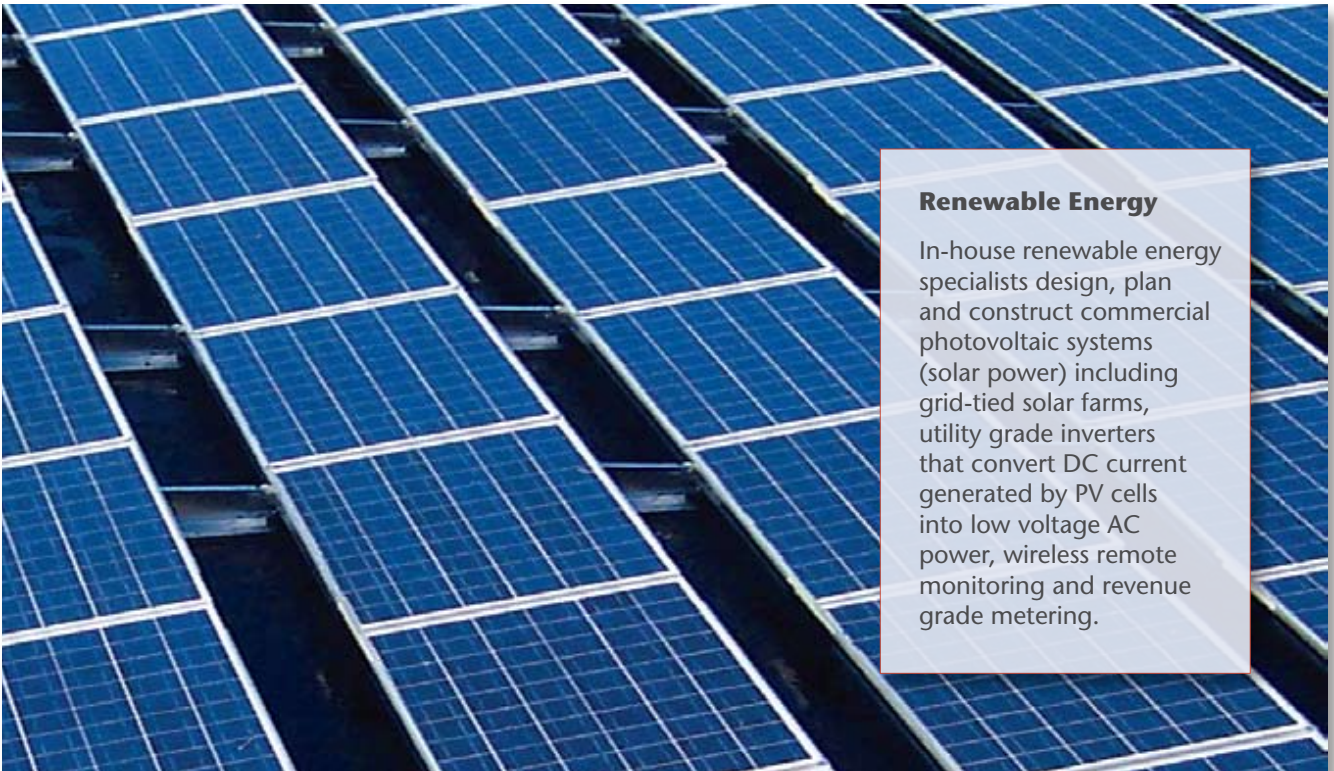
" J.F. White personnel have demonstrated their ability to address issues and propose solutions to keep the project on track and minimize the cost impact."

**Howard Duckworth
Montgomery Energy**



" Our success depends on J.F. White's ability to respond quickly with manpower and expertise. They are consistently reliable. We need our preferred vendors to be "of service" rather than "a service." We've always found that to be the case with J.F. White."

John Hines, Eaton Corp



Renewable Energy

In-house renewable energy specialists design, plan and construct commercial photovoltaic systems (solar power) including grid-tied solar farms, utility grade inverters that convert DC current generated by PV cells into low voltage AC power, wireless remote monitoring and revenue grade metering.

DEEP FOUNDATION SYSTEMS

SHEETING & SHORING / PILE DRIVEN SYSTEMS / UNDERPINNING SERVICES



Koch Institute for Integrated Cancer Research at MIT

Foundation of seven-story, 357,000-square-foot biomedical research building, a brownfield redevelopment with construction waste management plan

J.F. White is expert in all manner of foundations, earth support, pile driving and underpinning. Steel sheet pilings, soldier pile and lagging, and cofferdams are well known to the Company's support of excavation (SOE) specialists. Cofferdams are time-tested and invaluable tools in converting "in the wet" or submerged work areas to dry work platforms. The Company's extensive fleet of equipment is available for instant mobilization; including barge-mounted cranes and other specialized marine equipment.

"There are many moving parts to a construction project and you need someone to guide you through, someone who can remain focused and keep the project moving forward like J.F. White."

John Nolan
Harvard University



"J.F. White's people are innovative, bright and talented. Companies with strong leadership and talented people succeed and build enduring reputations."

John E. Regan, P.E.
GZA GeoEnvironmental, Inc.



MARINE CONSTRUCTION

OFFSHORE ELEMENTS / PIERS / COFFERDAMS / FENDER SYSTEMS



Broad Canal Walkway

Steel pipe pile supported walkway, timber deck, handrails and lighting

" J.F. White brought value to the Broad Canal Walkway project in many ways. They were very customer-oriented and offered alternative solutions that saved time and money."

Ron Bevacqua, GenOn



● Preconstruction

► Identify & Evaluate Project Issues/Risks Develop Solution(s)

- Foundation systems
- Geotechnical - existing & proposed
- Piling systems
- Land and/or marine access
- Coordination with Owner/Construction Manager
- Proposed structures, site conditions and adjacent structures
- Constructability reviews/Equipment analysis
- Analysis and design of alternate foundation & schemes
- Environmental and seasonal restriction reviews
- Environmental & soils engineering
- Scope review & confirmation
- Site Specific Safety Plan
- Crane and lift planning

● Budget & Schedule

► Estimate & Competitively Price

- Cost/Budget analysis
- Budget assessment on alternate systems
- Project schedule input & confirmation
- Value engineering for maximum savings to the client

● Construction

► Self-Perform & Manage Time-Critical Work

- Piling systems – Concrete piles, plastic piles, wood piles, helical piles, mini piles and all steel piles.
- Pile caps, grade beams and precast
- Cofferdams, sheet pile walls, and marine bulkhead
- Internal and external bracing – steel, timber lagging and tiebacks
- Various cut-off wall techniques
- Trestles, finger piers and sectional barges for temporary access
- Underpinning, soil stabilization, and dynamic compaction
- Company owned marine equipment available for instant mobilization
- Lifting capacity evaluation to ensure safe operations.
- Jetty & retaining wall construction in tidal zones
- Installation of sub marine cables.
- Complete diving services

DIVE SERVICES

INSPECTION/CONSTRUCTION/RAPID RESPONSE/SPECIALTY WORK

J.F. White's dive operations bring advanced life safety, communications and dive-related technologies (manned and unmanned) to inspections of tunnels, culverts, conduits, intake structures and significantly confined access environments. Services include forensic mapping of existing conditions in all areas of deteriorating infrastructure, applying construction knowledge to the science of inspection and evaluation.

Dive construction ranges from placement of deep water mechanical fixtures to complex sheeting and shoring installations. Work history includes development of means, methods and pneumatic tools to effectively maintain and repair aged water supply pipes and valves in excess of 500 feet below ground.

Rapid deployment in response to critical or emergency situations



● Underwater Construction

- Offshore and inshore underwater construction
- Underwater structural steel installation and concrete placement
- Conventional surface air diving and Atmospheric Diving Suit (ADS) capabilities for deep water operations
- Manned submersibles (Deepworker class) and Remotely Operated Vehicles (ROV)
- Submarine cables and beach landings
- Diving support of J. F. White general construction operations

● Proprietary Equipment Systems

- Submerged hyperbaric welding habitat
- Turbid water photography and video systems
- Umbilical fairlead system for ADS, ROV, or submersible deployment in shafts and tunnels
- Underwater Ground Penetrating Radar (GPR) system
- Unmanned submersible vehicle with on-board generating capability
- Underwater ultrasonic thickness gage for steel

● Design & Inspection

- Evaluation of alternative means and methods for Engineers
- Manned penetrations of submerged and partially submerged tunnels, outfalls, and conduits
- Sonar, GPR, and video survey in shafts and tunnels
- Deployment of specialized inspection equipment with real-time fiber optic data transmission
- Manned inspection capability to 1,000 feet sea water by ADS; manned capability to 2,000 feet sea water by submersible; ROV capability to 3,000 feet sea water

INNOVATION THROUGH TECHNOLOGY

PROVIDING EFFICIENCY, QUALITY, COORDINATION & COST CONTROL

Advances in technology have revolutionized project planning and delivery, providing project teams greater control on timely design, procurement, construction sequencing and cost control.

J.F. White optimizes the benefits of available technology to build with the greatest efficiency and quality. Years ago, the Critical Path Method or CPM, generated visual representations of the scheduling of critical, interdependent tasks to achieve milestones. Architectural plans and engineered shop drawings existed in separate realms, organized by trade responsibility.

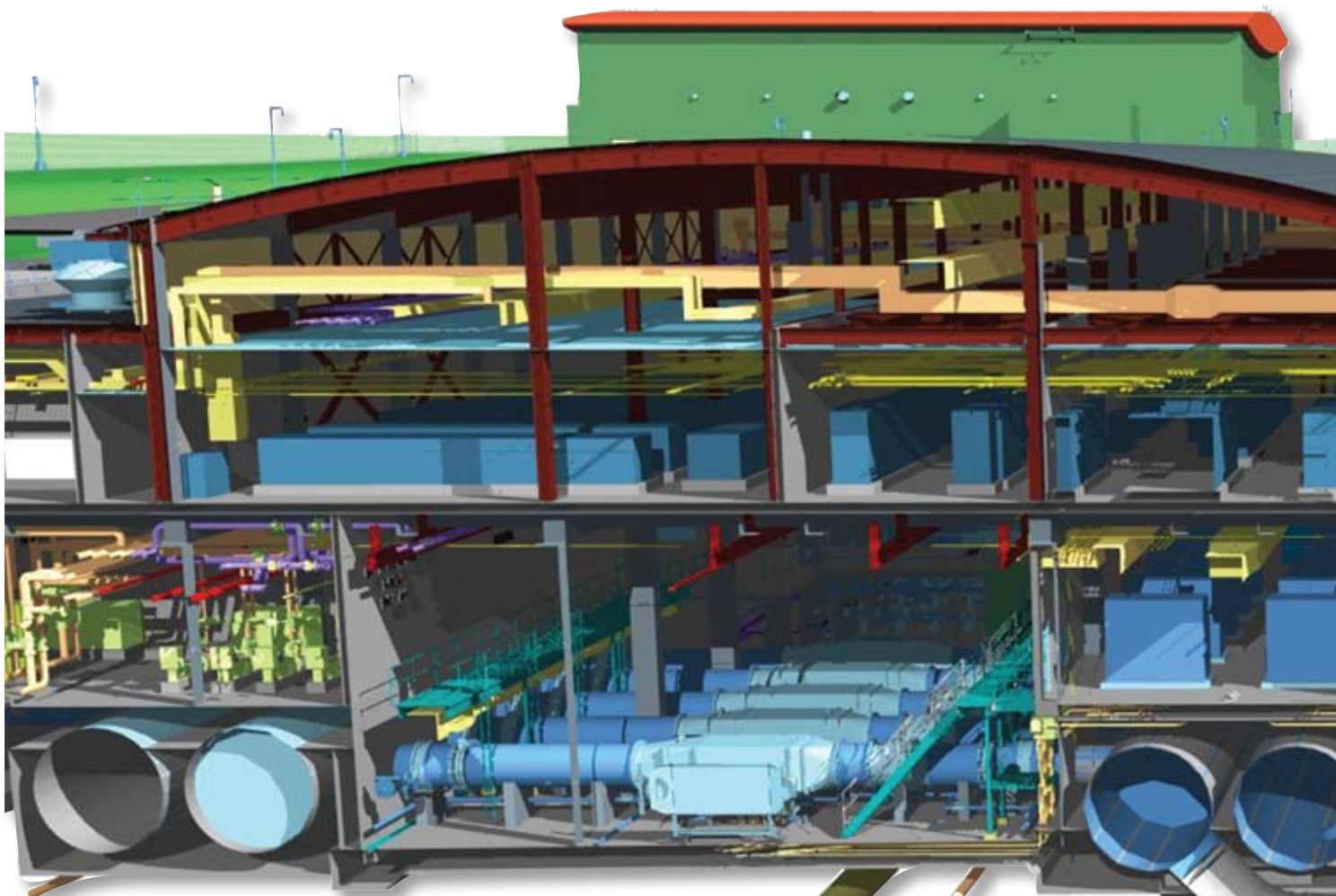
Today, "Building Information Modeling" or BIM, provides a 5-dimensional electronic model of a project, combining the three dimensions of the structure's height, width and depth with the additional dimensions of cost and schedule. The impact of a change in any one of the five dimensions is immediately reflected, creating a powerful tool for coordinating deliveries, trade activities, equipment resources and construction sequencing, as well as examining multiple "what if" scenarios.

In addition (and representing an emerging sixth dimension), BIM can be used to make **Site Specific Safety Plans** more adaptable to worksite changes and real time conditions.

J.F. White's commitment to using the most current project control systems serves to ensure project success for all parties.

" Considering the power and benefits of this technology, we build all complex projects with BIM."

Peter T. White
J.F. White Contracting Co.



J.F. WHITE PRIVATE CLIENTS

◆ Medical

Brigham & Women's Hospital
Boston Medical Center
Dana Farber Cancer Institute

◆ Institutional

Harvard University
MIT
Boston University
Boston College
Simmons College
Tufts University
Emerson College
Shady Hill School
Buckingham, Brown & Nichols

◆ Residential

Brook House Condominiums
Davis Lofts, LLC
99-105 Broad St., LLC
Broadway Real Estate Services

◆ Utilities

Montgomery Energy Partners, LP
Veolia Energy North America
National Grid
NSTAR
Distrigas
Enel

◆ Commercial/Industrial

General Dynamics
Raytheon Company
Gillette Company
Eaton Corporation
Prolerized New England
Simon Property Group
Nordstrom
Fore River Development, LLC
Twining Properties
GenOn (f/k/a Mirant Corporation)
Mystic Development, LLC



J.F. WHITE CONTRACTING COMPANY
10 BURR STREET
FRAMINGHAM, MA 01701
508-879-4700
WWW.JFWHITE.COM